



# Comparative Oncology Research Consortium

An initiative to benefit human and dog cancer patients

Our pet dogs get cancer – lots of cancer. What if we could help them and help humans with cancer by finding cures more quickly? Great veterinary medical centers are teaming up with leading cancer centers to help dogs and humans beat cancer. Beneficiaries of the canine comparative oncology research approach include human patients and canine patients (along with their owners). Our goal is faster and less costly drug therapies, as well as better informed clinical trial designs for both.

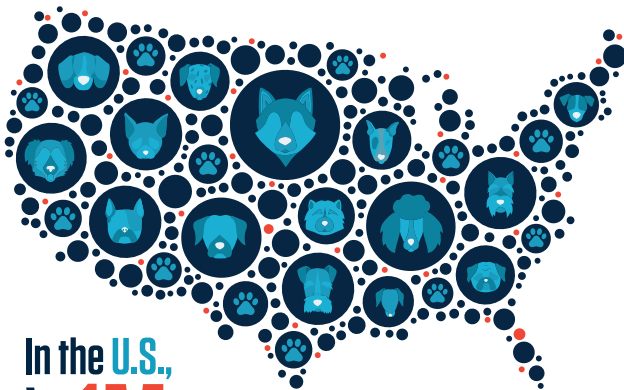
School of Veterinary Medicine



Cancer Centers



Comparative Oncology Research Consortium



In the U.S., **over 1M** companion dogs are treated for cancer each year.



**DOGS AND HUMANS ARE 85% GENETICALLY SIMILAR.**



To explore similarities and differences between human and canine cancers, researchers will study canine comparative oncology.



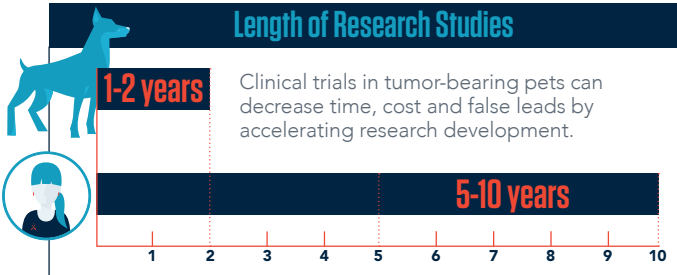
Canine tumors can share multiple characteristics with human cancers, including responses to specific therapies.



Some of the most prevalent cancers diagnosed in both humans and dogs include: sarcomas, melanoma, lymphomas, leukemia and bladder cancer.



Humans and dogs share the same environment, including air, water and pollutants.



For more information, please contact the V Foundation at (919) 380-9505.

